

## DATA SHEET

# SPC SQC SOLUTIONS

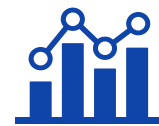
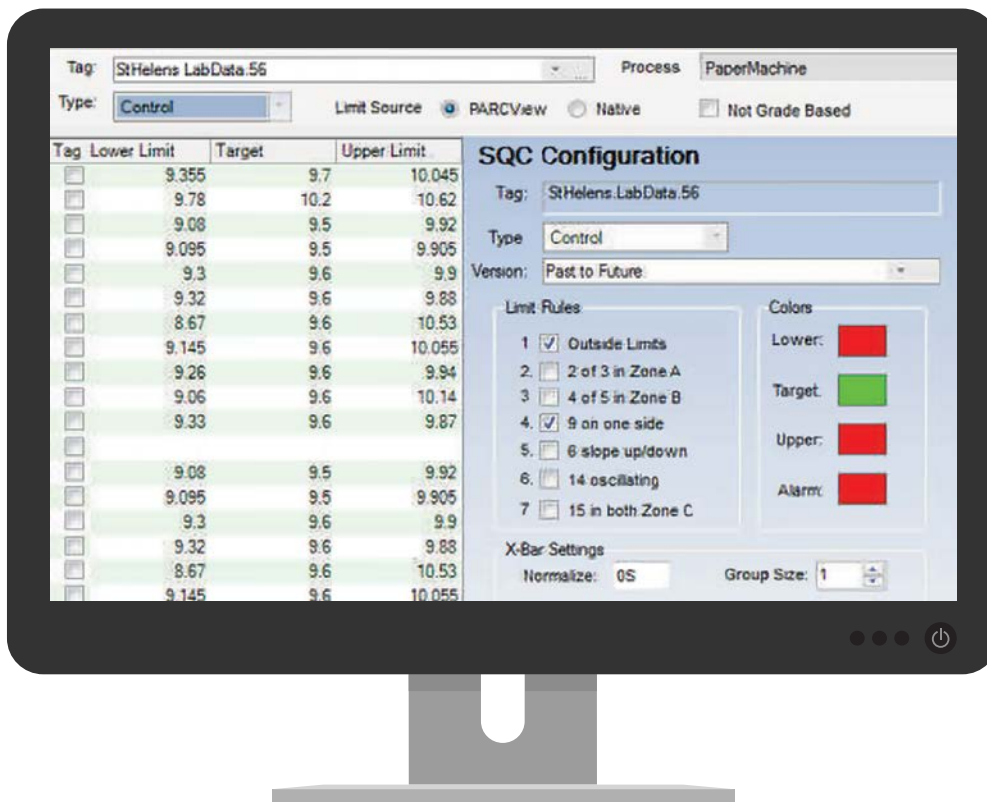
Easily implement online SPC/SQC utilizing dataPARC's integrated limit management tools and alarm/event engine.

## Analysis of Any Data Source

Apply PARCview's SPC/SQC analysis to tags from any data source available to dataPARC (Historian, LIMS, MES, etc). Build control charts from existing sources or calculated values from PARCview formulas.

## Flexible Rule Definitions

Custom limits to built in Western Electric Rules or custom logic can be used to identify out-of-control points. User-defined color coding for rule violations provides operators with real-time feedback by highlighting special causes in Trend, Centerline, and Manual Data Entry displays. The display tool shows which rule was violated and allows users to assign a cause.



## Determine Process Capability

Determine if your process is stable and capable of producing products within your specification limits.



## Make Better Operating Decisions

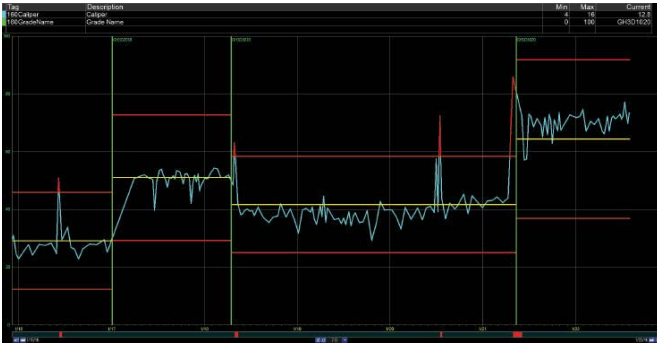
Use dataPARC's reporting capabilities to relay production loss data, by area, up and down the operator and manager chain.



## Track Process Improvements

Identify sources of variation and create a new target and limits when the process has been improved.

## More Features



### Grade-Based Limits

Create control and specification limits for each product category. PARCview will automatically display limits based on the defined criteria. When a new grade or product run begins, PARCview displays switch to the appropriate limits. Full support for limit versioning allows historical comparisons and all displays will use the limits that were in effect during the time period being evaluate.

Description	R	Current	Lower	Target	Upper	Temp Target	Grade			
							GH3D1020 16-May 08:41	GH3D1020 03-May 08:19	GH3D1020 02-May 07:22	GH3D1020 29-Apr 07:47
<b>Production</b>							0.89	0.86	0.92	0.5
PM1 Down (Shutdown, 1-up)	1	0.9					2365.32	2160.39	2397.41	2397.09
Yanklee Roll Speed		2398.71	2047.39	2386.96	2726.54					
<b>Metrics</b>										
Total Cost		100.96	600	650			594.92	530.8	668.26	687.82
<b>Process</b>										
PM SucRollInVac		15.71	15	16	17		15.77	15.78	15.72	15.77
PM 1/E Supply/Fan		944	930	950	990		954.01	974.96	963.96	943.27
PM Fall/InHeater		34.55	30	34	38		32.97	34.8	35.43	39.4
PM 140/SuTemp		403.71					404.3	401.33	405.32	395.47
PM Saveall1		94.18					95	95	95.06	94.98
PM Saveall2		53.83					49.07	46.07	50.54	44.21
PM Accep10Saveall		5111.83					5048.12	5083.67	5113.42	4965.83
PM SaveallChest		-5					-3.72	-5	-5	-3.1
PM TPD>FanPrmp		35					28.72	26.69	26.89	21.86
PM V/Pis/Roller		3051.36					2944.74	2975.78	3078.06	2913.23
PM V/Pis/Roller1		59.29					56.17	56.89	59.07	55.36
PM Blend>R/Flr		995.03					1090.82	1094	1022.16	1039.96

### Centerline And Histogram Integration

In addition to Trends, PARCview's Centerlines and Histogram charts provide a platform for SPC/SQC analysis and calculation of Cpk by product or grade. Both operators and engineers can take advantage of Centerlines with SPC/SQC limits enabled to work on centering their process for peak performance.

## Root-Cause Analysis

Deliver additional value to SPC/SQC initiatives through root-cause analysis. PARCview makes it easy with off the shelf capability to create events, capture reason assignment and deliver analysis of all SPC/SQC rule violations.

