

## DATA SHEET

# Real-Time Production Cost Monitoring

Apply PARCview's visualization tools to production cost information to draw correlations between process operations and financial performance.



## ERP Interface

A two-way data interface with accounting software, such as SAP, provides direct access to current cost data. Build logic-based calculations with process variables to produce tags that track the usage rate and cost of raw materials, chemicals, and utilities.



### Make Better Decisions

Combining actual costs with continuous process data gives operators an indication of the economic consequences of the choices they make.

## Real-Time Monitoring and Escalation

View production cost information in real time and make timely data-driven decisions. Monitor against budgeted values by applying limits to cost tags and triggering alarms for excursions. Automatically deliver timely notifications to escalate the issue to the appropriate personnel. When important categories, such as chemical or energy costs, are continuously monitored, action can be taken immediately instead of waiting for dated reports.



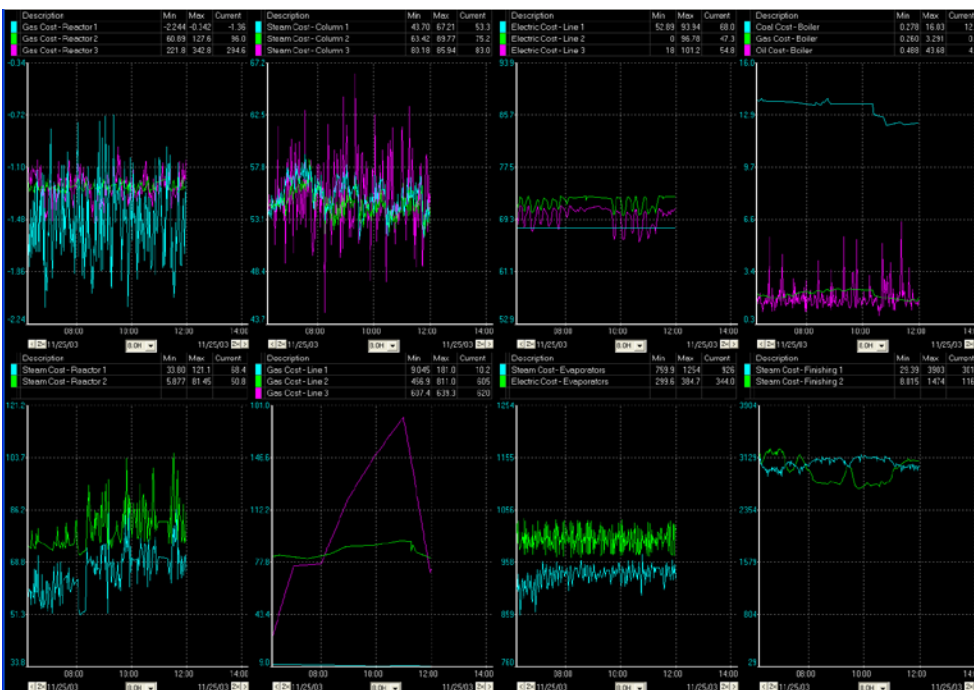
### Reduce Energy

Minimize energy costs by monitoring the consumption of all utilities (electricity, water, natural gas, compressed air, steam etc.)



### Uncover Hidden Costs

Visibility of real-time cost data provides insight into where resources are being wasted.



## Other Features

### Accommodating Instrumentation Challenges

For process variables that cannot be automatically measured, PARCview's Manual Data Entry system provides a solution like chemical totes that aren't connected to the DCS. For example, chemical usage can be tracked every shift or day, instead of relying on monthly cycle counts. Having a current digital inventory helps identify small changes that would otherwise go unnoticed. Tie MDE records to grade or product runs to quickly find outliers that influence cost on a run-by-run basis.

VENDOR 3	AREA	7/2/15	7/9/15
Chemical #1	Area 1	978	1228.4
	Area 3	923	788.5
Chemical #2	Area 3	751	564.4
	Area 4	913	9
Chemical #3	Area 2	923	350.5
	Area 3	607.5	440.4
Chemical #4	Area 2	751	804.4
	Area 4	504.1	557.8

### Cost Reporting And Gap Analysis

Through combined application of PARCpde's data aggregation and PARCview's tag limits, view statistical information from process runs or fixed time periods, such as production days or shift schedules, and calculate the difference from a budget or other standards. Construct production cost dashboards with the PARCgraphics Designer to get the big picture.

