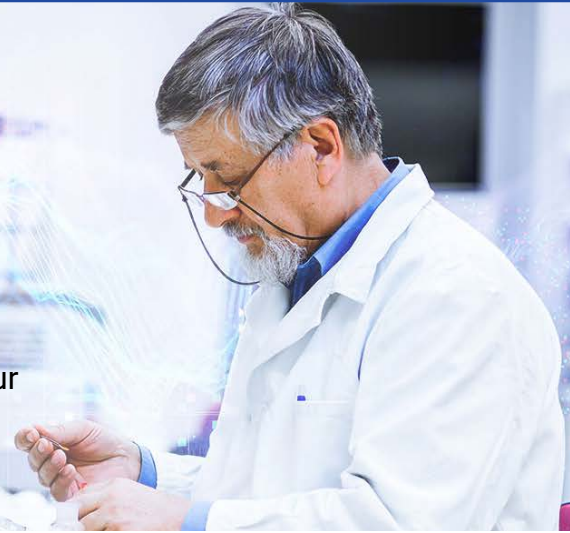


DATA SHEET

Lab Information Management

dataPARC provides an integrated and cost effective solution to your Laboratory Information Management System (LIMS) needs.



Flexible Recall

All data can be linked to data-and-time stamps or product-specific or grade-specific numbers or codes in the data historian to allow tag data to be quickly accessed, displayed, or analyzed over specific time periods or for specific products or grades.



Reporting & Notifications

Send data to manufacturing execution systems (MES) and other data historians, or configure reports to summarize critical lab data and calculations and automatically notify personnel when data falls outside of operating envelopes or other limits.



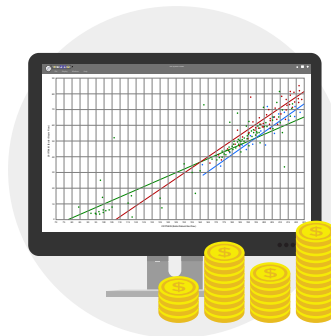
Limits & Alarms

Establish product-specific and grade-specific upper and lower limits for each data tag to help with centerlining efforts. Multiple limits and alarms can be set up to color-coded displays and alarm trees can be set up to assign reasons for alarms.



Data From Any Source

Log data from lab instruments and automated testing equipment and store it alongside process data in the historian.



Cost Effective Integration

Use built-in statistical tool set to create histograms and X-Y plots to explore the relationships between process data and/or lab data.



Security

For every record stored and every value changed, detailed audit trails are created to track changes made by these users.

Key Features

MD Tensile Tests

Refresh Data Refresh To Now Auto Refresh

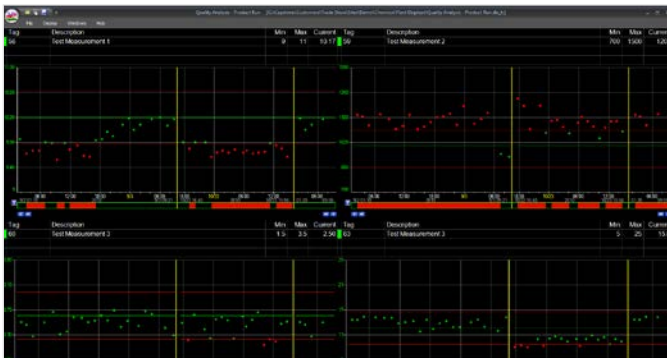
Save Record Record Status: [Status Icon]

Record Selector: 02/05/13 09:00 - 33436

Tensile							
	Front	Front Center	Back Center	Back			
Test 1	69.5	Test 1 63.6	Test 1 63.6	Test 1 61.4			
Test 2	63.7	Test 2 64.9	Test 2 61.1	Test 2 63.8			
Average	66.6	Average 64.3	Average 62.4	Average 62.6			

Highly Configurable Manual Data Entry

The standard tabular MDE format provides incredible flexibility with over a dozen options for data entry, including pick lists for data validation, multidimensional entry, automated calculations, and entry restrictions. PARCgraphics Designer's form-based MDE tools offer a platform for constructing custom data entry screens. Enter data against a record from anywhere within the dataPARC environment, across multiple MDE pages, PCs, and locations.



SPC/SQC Analysis

Product-specific and grade-specific upper and lower limits can be easily established in PARCview for each data tag to help with centerlining efforts. Multiple limits and alarms can be set up to color-coded displays and even automatically notify personnel when data falls outside of operating envelopes or other limits. Alarm trees can be set up to assign reasons for alarms, and Pareto charts can be created to help identify the prevalent causes of alarms.

Record State	Product Label	Start Time	Grade Name	MDTensile.B	MDTensile.BC	MDTensile.F
[Icon]	Reel: 12/08/13 - 02:02 PM	12/08/13 14:02	GH3D1020	1912.55	1838.99	1711.92
[Icon]	Reel: 12/08/13 - 02:33 PM	12/08/13 14:33	GH3D1020	2111.59	2030.37	1805.75
[Icon]	Reel: 12/08/13 - 03:07 PM	12/08/13 15:07	GH3D1020	1890.33	1817.63	1659.02
[Icon]	Reel: 12/08/13 - 03:32 PM	12/08/13 15:32	GH3D1020	1528.82	1470.02	1936.50
[Icon]	Reel: 12/08/13 - 04:06 PM	12/08/13 16:06	GH3D1020	1909.42	1835.98	1978.46
[Icon]	Reel: 12/08/13 - 04:23 PM	12/08/13 16:23	GH3D1020	1528.82	1470.02	1936.50
[Icon]	Reel: 12/08/13 - 04:47 PM	12/08/13 16:47	GH3D1020	1528.82	1470.02	1936.50
[Icon]	Reel: 12/08/13 - 05:12 PM	12/08/13 17:12	GH3D1020	2187.48	2103.35	1516.44
[Icon]	Reel: 12/08/13 - 05:36 PM	12/08/13 17:36	GH3D1020	2187.48	2103.35	1516.44
[Icon]	Reel: 12/08/13 - 06:02 PM	12/08/13 18:02	GH3D1020	2033.43	1955.22	1279.88
[Icon]	Reel: 12/08/13 - 06:35 PM	12/08/13 18:35	GH3D1020	2125.45	2043.71	1357.48
[Icon]	Reel: 12/08/13 - 06:59 PM	12/08/13 18:59	GH3D1020	2125.45	2043.71	1357.48
[Icon]	Reel: 12/08/13 - 07:23 PM	12/08/13 19:23	GH3D1020	2183.28	2099.30	1933.18
[Icon]	Reel: 12/08/13 - 07:47 PM	12/08/13 19:47	GH3D1020	2183.28	2099.30	1933.18

Flexible Record Creation

Configure an MDE displays record creation logic to match data requirements. Link new records to production units (SKU), or schedule record creation for periodic testing. Add records on demand for non-scheduled testing, and even query 3rd party databases for record information. Each record contains identifying information, such as time, product label, or grade.

File Display Windows Help

Tag: Description:

Flow Flow

Consistency Consistency

TagSource.TotalFlow/EXPR = (IV * TagSource.Conc

Integrated Scripting Engine

Lab test results often provide inputs to other calculations and the integrated scripting allows calculations to be performed automatically, reducing errors and improving the accuracy of stored data.