

CASE STUDY

Western Plains Energy, LLC

Western Plains Energy uses data automation to work more efficiently.



“dataPARC has given me the ability to access data anywhere, any time that I want it”



Derek Peine,
General Manager,
Western Plains Energy



5-10 Hours Saved

Per Week, Allowing Operators
More Time to Troubleshoot



Easy User Interface

Customize and Configure Without
Third Party Software



Remote Access

Access Data and Reports
From Anywhere

Western Plains Energy's Story

Western Plains Energy is a thriving ethanol production facility located in Oakley, Kansas. WPE began operations in 2004 and now produces approximately 50,000,000 gallons of denatured ethanol annually. Data management is essential to smooth and successful plant operations at Western Plains.

Western Plains Energy's Challenges

WPE's production process requires reviewing and analyzing large amounts of data by various people within the organization. Their previous data management system had limitations. Data from the DCS system was only available on the control network, and the laboratory data was scattered across various spreadsheets that provided varying levels of access to different people. With the old system, WPE had to spend a great deal of time reconfiguring data to put it into a useable form.

The dataPARC Solution

Some of the key criteria for WPE's new system was the ability to configure data themselves and not to rely on a third party to do so. dataPARC partnered with Novozymes, providing the industry expertise needed to deliver a customized Ethanol solution to WPE. dataPARC also worked closely with WPE to identify their specific data needs and helped to implement Capstone's dataPARC software suite, an intuitive plant-wide data integration solution.

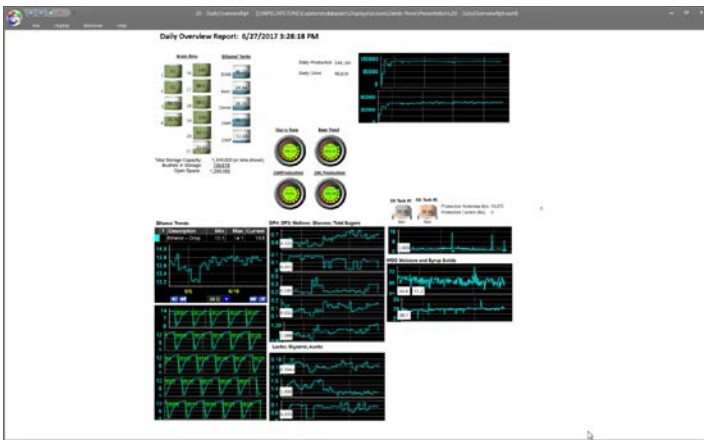
Results Were Immediate And Impactful Including:

- 5-10 hours saved per week, allowing operators to troubleshoot rather than track down data
- Production and lab data is accessible in one place at any time
- Process adjustments happen more quickly and efficiently, saving time and money
- User interface is easy to manage, customize and configure without the use of a third party
- Access to large amounts of historic data rapidly and efficiently
- The ability to access data and reports remotely

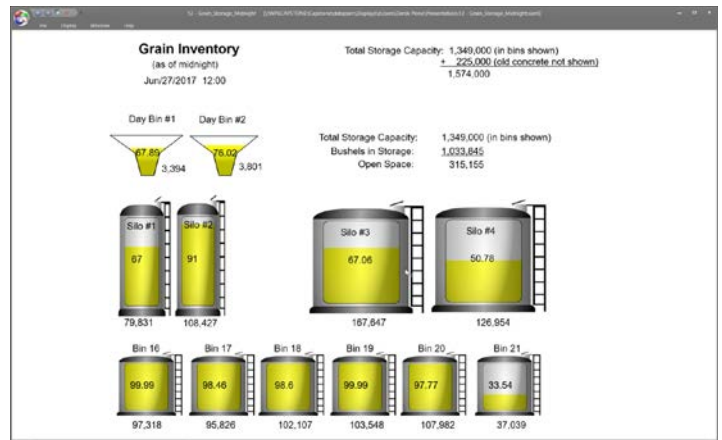


Western Plains Energy has relied on dataPARC to easily locate multiple sources of critical information. Data and reports are accessed and delivered in highly customizable ways.

Live Dashboards of Plant – Views of the entire plant operation available to users everywhere.



Live Daily Report - Used by plant managers to evaluate plant performance.



Grain Inventory Dashboard – Live view of all inventory feedstock.

Process Trends of Plant – Detailed trends of plant performance for process troubleshooting and analysis of the plant.



Overview of key trends from the entire plant, from many different sources, including DCS and Lab data.